



ION I

CONTEMPORARY LIVING

2,017 total square feet

3 Br, 2.5 Ba

The Ion by MossCreek is a contemporary reimagined home from the modern era.

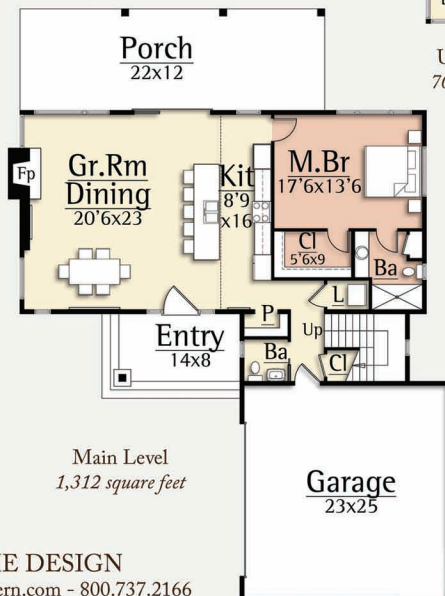
Stone, glass, wood and corrugated metal create a mix of modern and warm materials for a balanced Yin Yang architectural expression.

The interior of the Ion features open living areas and master suite with beamed ceilings on the main level. The vaulted ceiling of the great room lets dramatic light fill the home. On the upper level the Ion features two pleasant guest rooms, and a shared bath.

The result is a modern styled home that is a perfect for living and entertaining in any environment.



Upper Level
705 square feet



Main Level
1,312 square feet



MODERN HOME DESIGN

www.MossCreekModern.com - 800.737.2166